

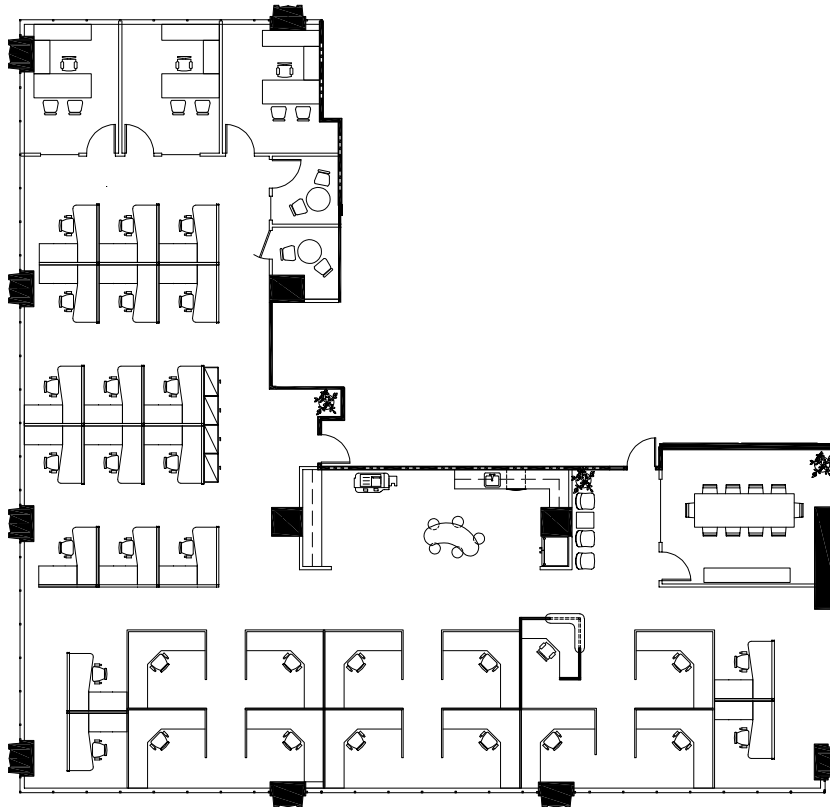
# 700

17TH STREET

## SUITE 1900

HYPOTHETICAL LAYOUT & FURNITURE PLAN

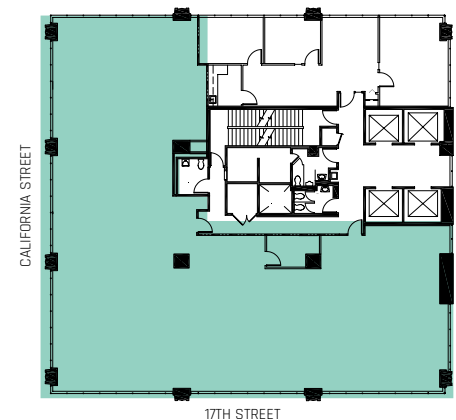
### 5,415 RSF



#### Suite Highlights:

- 3 offices on glass
- 1 conference room
- 2 call/huddle rooms
- Large Bullpen
- Open break area

#### Key Plan:



#### FOR MORE INFO, PLEASE CONTACT:

**Bo Pitto**  
+1 303 260 6529 | [bo.pitto@jll.com](mailto:bo.pitto@jll.com)

**John Beason**  
+1 303 217 7949 | [john.beason@jll.com](mailto:john.beason@jll.com)

© 2022 Jones Lang LaSalle Brokerage, Inc., a licensed real estate broker. All rights reserved. All information contained herein is from sources deemed reliable; however, no representation or warranty is made to the accuracy thereof.

